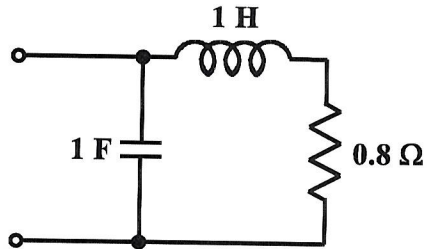


EE 3340
Homework Problem #029



Use LTspice to determine:

- (a) the resonance frequency for this circuit, and

$$f_R \approx 95 \text{ mHz}$$

- (b) the input impedance at that frequency.

$$|Z_{in}| \approx 1.25 \Omega$$

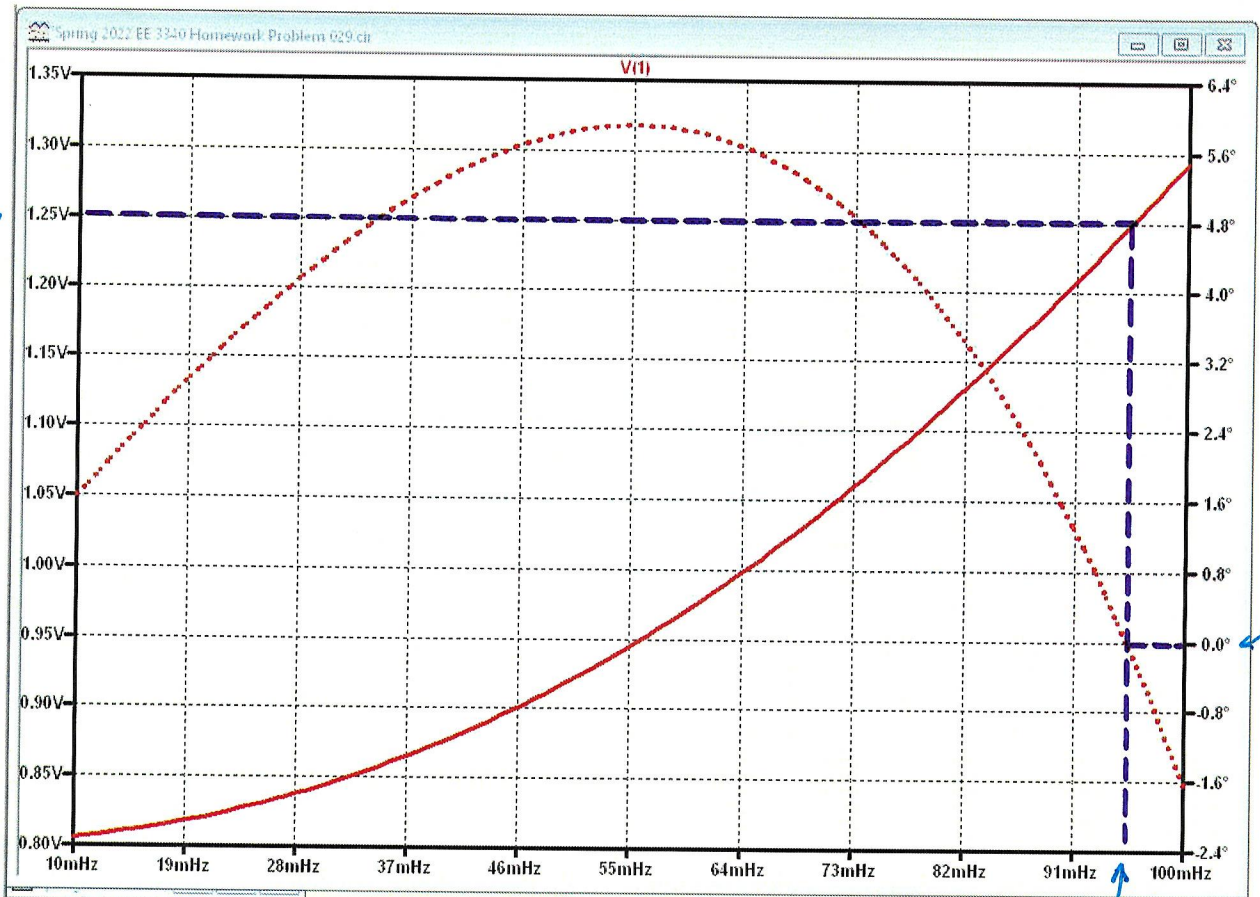
See the attachment for details

```

Spring 2022 EE 3340 Homework Problem 029.cir
* Q:\EE 3340\homework\spring 2022 EE 3340 Problem 029.cir
L 1 2 1
C 1 0 1
R 2 0 0.8
I 0 1 AC 1 0
.AC LIN 100 0.01 0.1
.end

```

$|Z_{in}|$ is $\approx 1.25 \Omega$
at resonance



Phase angle is zero
at resonance

resonance frequency
is $\approx 95 \text{ mHz}$